



INSTALLATION INSTRUCTIONS FOR SUPER-SLIDE® LINERS 96", 118", 120", & 156" wide

Not every liner installation will be the same. At any time, if you have any questions regarding an installation please contact Horn Plastics Inc. at 800-373-7448

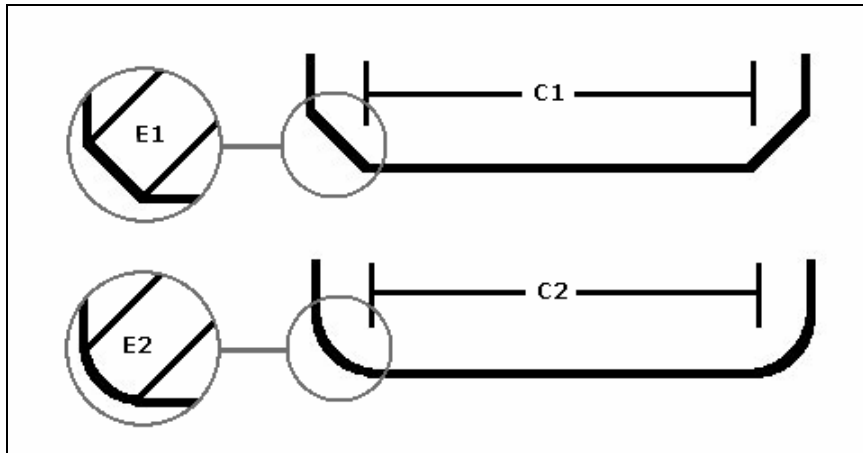
Before you start, you will need the following tools to complete the installation:

Tape Measure	Drill	13/32" Drill Bit
1 1/2" Spade Bit	Chalk Line Marker	(4) Ratchet Cargo Jacks
(4) Come-A-Longs	Circular Saw	(8) C-Clamps Vise Grips
Forklift or Lifting Device		

1. The liner must be installed on a flat surface. Prior to installation, any depressions must be filled with plastic, plywood, aluminum or steel and be fastened down to make the plastic lay flat on the floor.
2. Unroll the liner.
 - a. UHMW Red Hot - Tail kit needs to be at the rear end of the truck floor with the steel plate facing down.
 - b. UHMW Blue Iron - Unroll and do not flip; **the shiny side needs to be face up.**
 - c. HMW Blue Stripe - Unroll and flip over; **the natural curve of the liner needs to be down.**
3. Measure the length of the bed. The liner will need to be cut to length for expansion using the following formula:
Cold Load: Length of Body \div 10
20 foot liner will need 2" cut off ($20 \div 10 = 2$)
Hot Asphalt: Length of Body \div 4
20 foot liner will need 5" cut off ($20 \div 4 = 5$)
4. Measure the dog house. Using a circular saw or jigsaw cut the dog house out of the liner. Before cutting the dog house, drill pilot holes at the rear corners of the dog house. This will prevent a natural tear starting at the corners from over cutting.
5. Mark the center of the liner and the center of the trailer body on both the front and rear. Use these marks in #8.

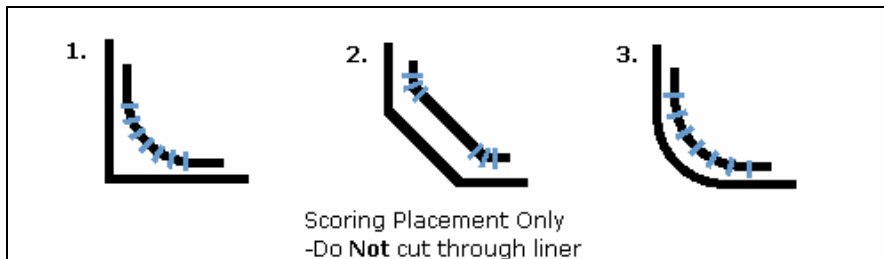
6. Score 3/8" and 1/2" thick liners; **the score marks must be facing up.**

- a. Measure distance between cleanouts: C1 or C2
- b. Measure cleanout width: E1 or E2

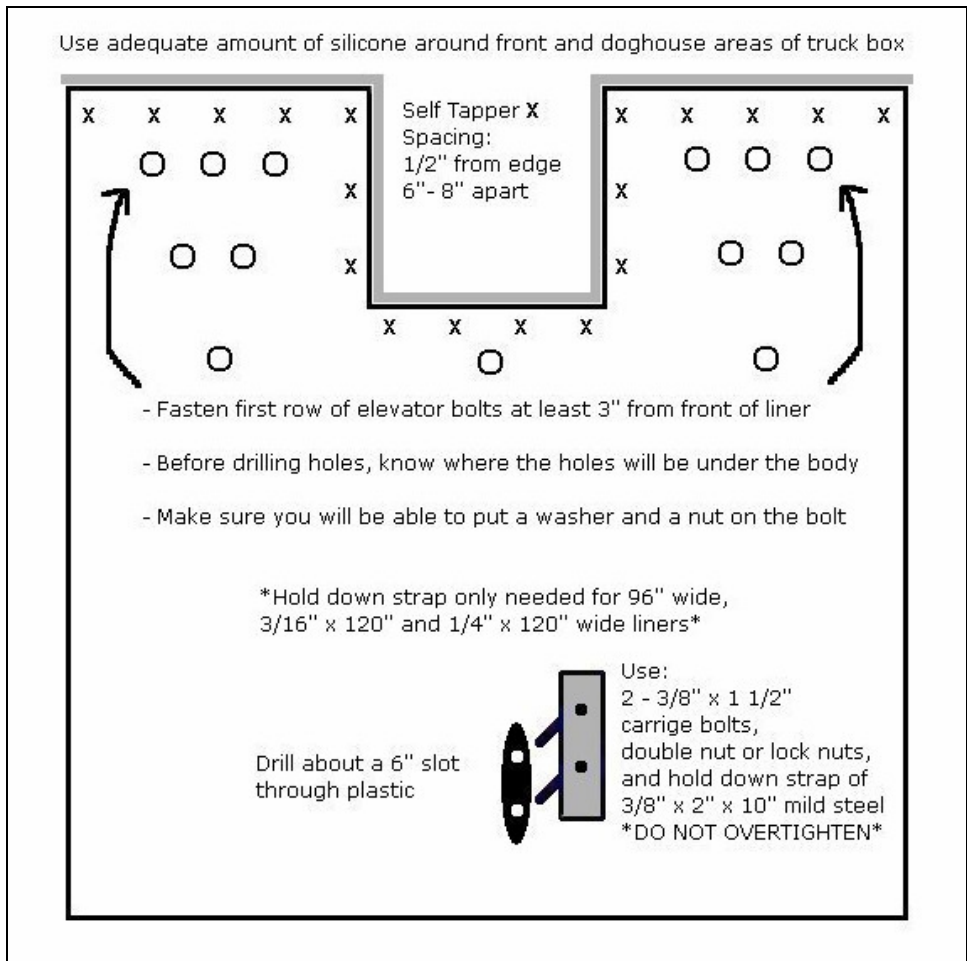


- c. Mark the measurements the full length of the liner with a chalk line
- d. Set circular saw depth, and test the depth on a scrap piece of plastic
 - Leave 3/16" of liner remaining
 - Be careful not to score through the liner

1: Right Angle Corners =	6 scores	1/8" wide	3/8" apart
2: 45° Corners =	2 sets of 3 scores	1/8" wide	3/8" apart
3: Radius Corners =	6-8 scores	1/8" wide	3/4" - 1" apart



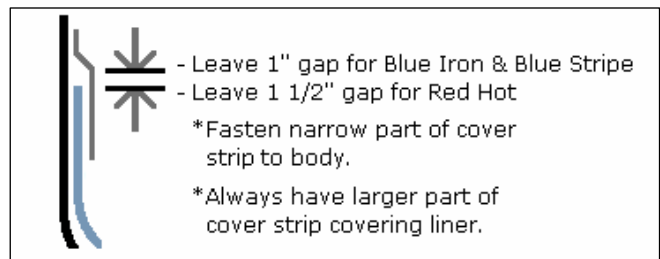
7. Form the liner into a U shape lengthwise by using c-clamps and come-a-longs and lift the U shape liner into the box using a forklift or a lifting device.
8. Match up the center marks from step #5 of the trailer body with the center marks of the liner. At the front and back, insert a 1/4" self taper on the center marks, to hold the liner in place while fastening. If liner is scored, the self taper in the back isn't necessary. The screws will need to be removed at the end of installation.
9. Remove c-clamps and come-a-longs, and work the liner down in the front corners, middle and rear using the ratcheting cargo jacks. The longer the body, the more jacks will be needed. When the liner in the corners is less than 1" from touching the floor, install six to eight 3/8" x 2" elevator bolts with a lock washer and nut on each side of the doghouse. Use the spade bit to counter-bore the plastic so elevator bolts are flush with the plastic. See diagram on next page.



**** Skip steps #10-13 for 96" wide liners ****

10. Place silicone caulking on the section of the cover strip that will fit against the side wall of the body.

11. Leave about a 1" gap between the top inside of the cover strip and the top edge of the liner with all Blue Stripe and Blue Iron liners. For Red Hot liners leave a 1 1/2" gap.



12. Fasten the cover strips by using huck rivets, welding, self-tapping screws or other fastener. It is best to stay within the support beams to conceal the fasteners on the outside of the body.

13. Place a bead of silicone around the dog house and bulk head to prevent materials from getting between the body and the liner.

**** For all 96" wide liners and 3/16" x 120" and 1/4" x 120" wide liners ****

14. Install a hold down strap approximately a third of the way up from the rear.

**** Final step for all liners ****

15. Remove self tappers from step #8.



SUPER-SLIDE REGISTRATION

Congratulations on your purchase of a Super-Slide® lining system. In order to record your purchase for future reference, please complete the following form and return to Horn Plastics Inc. within 20 days of the date of purchase. Please make a copy for your records and mail or fax a copy to Horn Plastics Inc. PO Box 5312, Fargo ND 58105. Fax # 701-281-0439.

Name _____ Company _____

Address _____ City _____ State _____ Zip _____

Phone# _____ Fax# _____ Mobile# _____

Liner Purchased on _____ Material _____ Size _____
(Date) (ex. Blue Stripe, Blue Iron, Red Hot) (ex. 3/8" x 118" x 20'0")

Purchased from _____ City _____ State _____ Zip _____

Installed in _____ Installed on _____
(Truck or Trailer #) (Date)

Installed by _____ Materials Being Hauled _____

In order to maximize the life and performance of your Super-Slide® lining system, the following conditions and stipulations must be followed in installation and continuing maintenance

*When the liner is scored the score must face up. Liners installed upside down will not be covered.
*When installing a tail kit on the Red Hot Asphalt liner, the plate must be installed on the bottom side of the liner at the tail end of the box.

- 1) The Floor over which the liner is to be installed must be FLAT, any depressions must be filled with plastic, plywood, aluminum or steel and be fastened down to make the floor flat prior to installation.
- 2) The Liner must be fastened in such a manner at the front of the box so that no material is able to get behind or underneath the liner. (fasteners, silicone, or flashing)
- 3) The Liner and especially the rear of the liner must be inspected daily. Any foreign materials that have worked under the liner must be removed immediately
- 4) Bolts or other fasteners through the lining material in any location other than the front of the material will void any and all warranties
- 5) It is the dealers/installers and or customer's responsibility to ensure enough fasteners are used to secure the liner in place. If too few fasteners are used, or fasteners are too close to the edge of the lining material, the plastic may tear away from the fasteners and slide out with the load. Claims for liners that show evidence of tearing away from the fasteners will not be honored
- 6) Claims for holes, punctures or tears in the liner caused by broken concrete, rebar, rip rap, or steel will not be honored
- 7) In some installations a hold down strap is required (check with Horn Plastics Inc). The use of narrow liners or light gauge material could result in wind turbulence lifting the liner. A hold down strap is the customer's responsibility to install or have installed. Claims for damage caused by not having a hold down strap will not be honored.
- 8) Improper installation by customer may void warranty

Claim Instructions: Any warranty claim must be submitted in writing to Horn Plastics Inc., with photos of the front 1/3rd, middle 1/3rd and the rear 1/3rd, with emphasis on the problem area. If the photos do not establish a valid warranty problem, the liner must be returned to Horn Plastics Inc., freight prepaid for inspection. If a warranty is then deemed valid, the material will be replaced or repaired with the freight pre-paid and the freight for the returned liner will be refunded.

Warning: This product is intended to significantly reduce friction between itself and any property or person placed upon it. Use extreme care as any property or persons on it can lose traction, slipping or sliding unexpectedly. Due to the nature and/or purpose of this product for which it may be used, the manufacturer and dealer specifically disclaim any liability by consequential, special or indirect damages resulting from the use of this product. The buyer shall assume all risk. The manufacturer and dealer make no warranties of merchantability or fitness for a particular purpose, nor any other expressed or implied warranty.

Red Hot Asphalt Liner: No guarantees are implied or stated that the liner will eliminate asphalt sticking. In most cases, it does eliminate sticking, or reduce the amount of release agent needed. We recommend you use release agents and gradually reduce the quantity.

If you have any thoughts or comments regarding our Super-Slide products, please contact your sales rep or our office at 800-373-7448. Horn Plastics, Inc. is very proactive when it comes to customer satisfaction.

I have read and understand the above warranty disclaimer and maintenance advisory. I understand that my rights under any stated or unstated warranty may be limited or lost through failure to comply with above conditions

Date _____ Printed Name _____
Signature _____

Comments:
